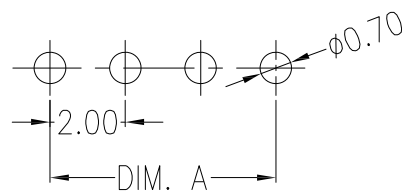
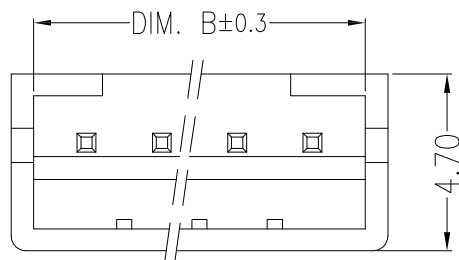
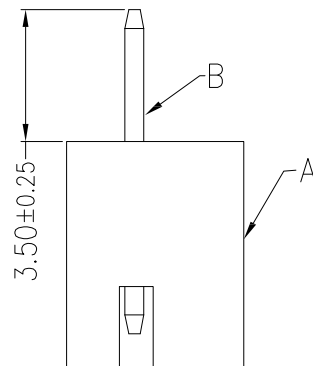
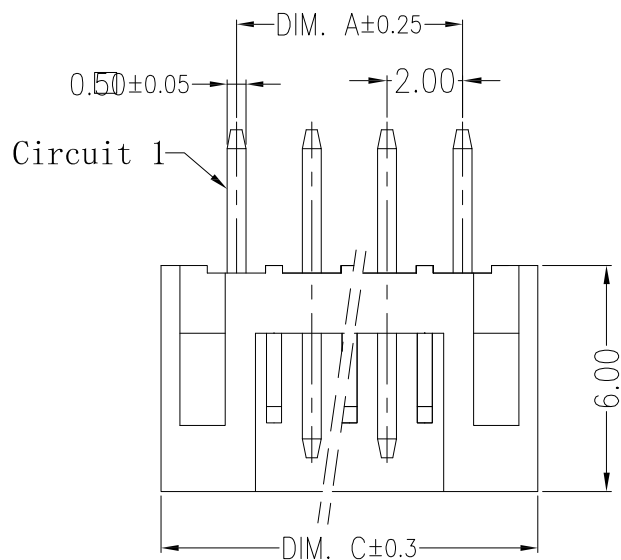


环保物料



SUGGESTED PCB LAYOUT  
(COMPONENT SIDE)

主要技术参数 Main Specifications

线 数 (Poles): 02 to 16  
 接触电阻 (Contact resistance):  $\leq 20m\Omega$   
 绝缘电阻 (Insulation resistance):  $\geq 1000M\Omega$   
 额定电压 (Rated voltage): 250V AC DC  
 额定电流 (Rated current): 2.0A AC DC  
 耐电压 (Withstand Voltage): 1000V AC/minute  
 温度范围 (Temperature Range):  $-25^{\circ}C \sim +85^{\circ}C$

Circuits	Dimensions(mm)		
	DIM. A	DIM. B	DIM. C
02	2.00	4.80	6.00
03	4.00	6.80	8.00
04	6.00	8.80	10.00
05	8.00	10.80	12.00
06	10.00	12.80	14.00
07	12.00	14.80	16.00
08	14.00	16.80	18.00
09	16.00	18.80	20.00
10	18.00	20.80	22.00
11	20.00	22.80	24.00
12	22.00	24.80	26.00
13	24.00	26.80	28.00
14	26.00	28.80	30.00
15	28.00	30.80	32.00

ITEM	COMPONENT	Q'TY	MATERIAL	FINISH
B	CONTACT	2~16 PCS	Brass	Sn-plated
A	PEDESTAL	1 PCS	PA66	COLOR:BEIGE

REV.	REVISION RECORD	DATE	UNIT: MM	GENERAL TOLERANCES		SCALE: 1:1	NAME	DATE
				LINEAR	ANGLES			
A0	新图面发行	2017.06.16	MM	0.00±0.25	X° ±3°	APPROVED	黎腾	2017.06.16
	REVISION RECORD	DATE	SIZE: A4	0.000±0.15	X° X'±2°	DESIGNER	肖坤权	2017.06.16
						DRAWN	旷淇	2017.06.16

**康导新能源**  
 网址: www.dgconne.com 电话: 0769-85337633  
 邮箱: 2850175986@qq.com 传真: 0769-85392827

PART. NO:	22001A	
DWG. NO:		
REV:	A0	SHEET: 1/1