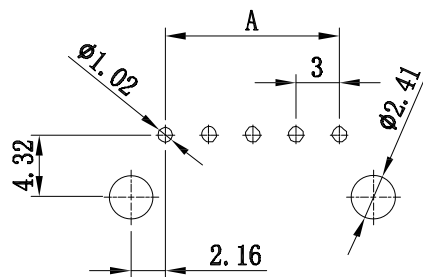
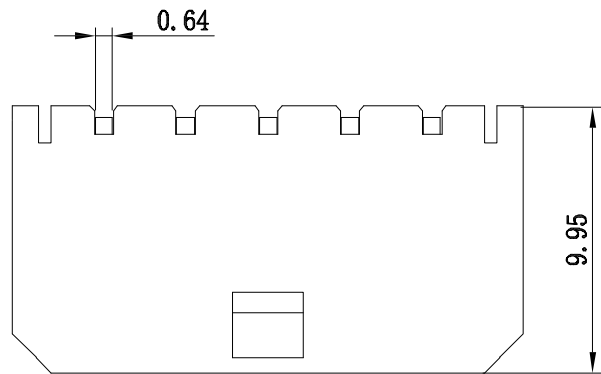


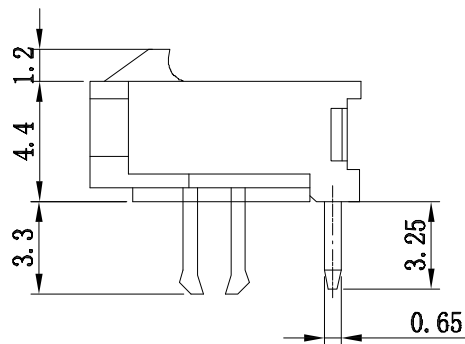
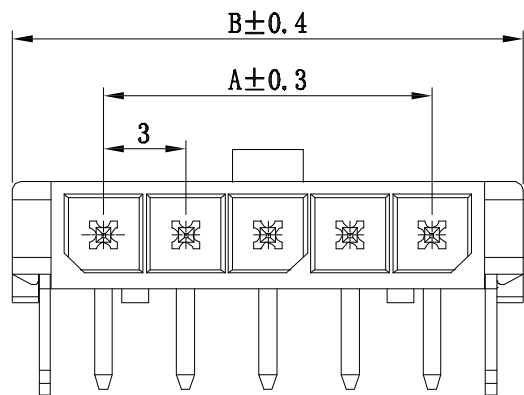
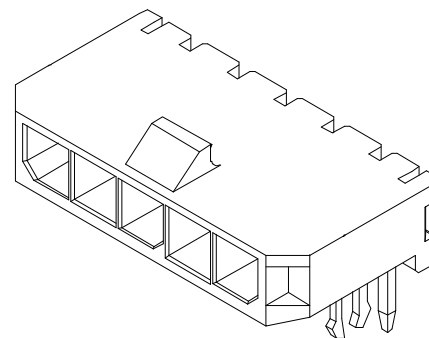
环保物料



P. C. B LAYOUT

Specifications:

Contact resistance:  $\leq 20m\Omega$   
 Insulation resistance:  $\geq 1000M\Omega$   
 Rated voltage: 250V AC DC  
 Rated current: 5.0A AC DC  
 Withstand Voltage: 1000V AC/minute  
 Temperature Range:  $-25^{\circ}C \sim +85^{\circ}C$



Poles	Dimensions mm	
	A	B
2	3.00	9.65
3	6.00	12.65
4	9.00	15.65
5	12.00	18.65
6	15.00	21.65
7	18.00	24.65
8	21.00	27.65
9	24.00	30.65
10	27.00	33.65
11	30.00	36.65
12	33.00	39.65

序号	图号	名称	材料	数量	附注
3		Press-fit	Brass Tin	2	
2		Contact	Brass Tin	N	
1		Housing	PA9T (UL94V-0)	1	Black

GENERAL TOLERANCES		SCALE:	NAME	DATE	康导新能源 <a href="http://www.dgonne.com">www.dgonne.com</a> 电话: 0769-85337833 邮箱: 2850178988@qq.com 传真: 0769-85392827	PART. NO: 23001AWRC						
LINEAR	ANGLES	1:1	APPROVED	黎腾			2017.06.16					
0.00 ± 0.35	X° REF ± 6°		DESIGNER	肖坤权			2017.06.16					
0.00 ± 0.25	X° ± 3°		DRAWN	旷淇			2017.06.16					
REV.	REVISION RECORD	DATE	UNIT: MM	SIZE: A4	0.000 ± 0.15	X° X' ± 2°	TITLE:	3.00mm PITCH 90° WAFER DIP TYPE	REV:	A0	SHEET:	1/1



康导新能源

网址: www.dgonne.com 电话: 0769-85337833  
 邮箱: 2850178988@qq.com 传真: 0769-85392827

PART. NO: 23001AWRC

DWG. NO:

REV: A0 SHEET: 1/1