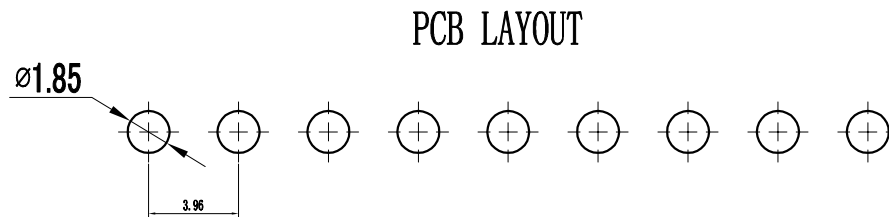
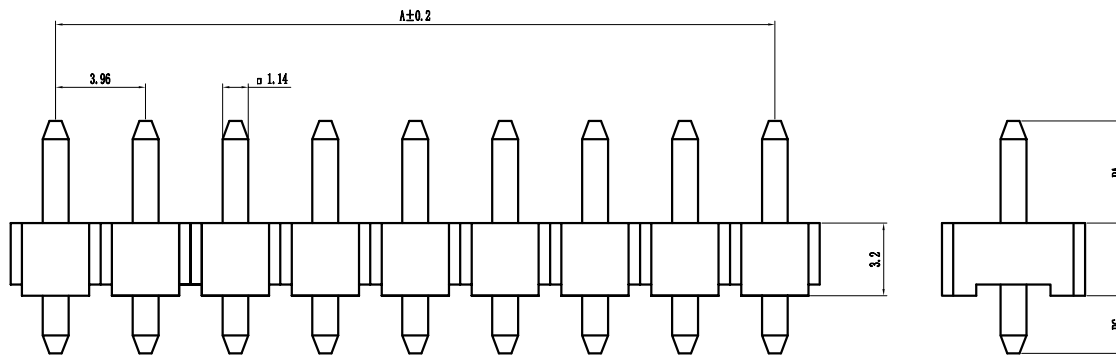
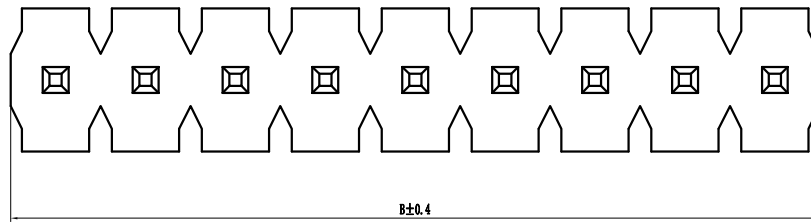


环保物料

Pin数	尺寸A	尺寸B
1X1	-	3.96
1X2	3.96	7.92
1X3	7.92	11.88
1X4	11.88	15.84
1X5	15.84	19.80
1X6	19.80	23.76
1X7	23.76	27.72
1X8	27.72	31.68
1X9	31.68	35.64
1X10	35.64	39.60
1X11	39.60	43.56
1X12	43.56	47.52
1X13	47.52	51.48
1X14	51.48	55.44
1X15	55.44	59.40
1X16	59.40	63.36
1X17	63.36	67.32
1X18	67.32	71.28
1X19	71.28	75.24
1X20	75.24	79.20



Specification:
 Current Rating : 7AMP
 Temperature Range : -40°Cto+105°C
 Contact Resistance : 20mΩ Max
 Insulation Resistance : 1000MΩ Min
 Withstanding Voltage : AC 1000V
 Material:
 Insulator : Polyester (UL94V-0)
 Standard:PA6T/LCP
 Contact: Brass
 Plating : Au or Sn Over 50u" Ni

P 39 0D-XXX K X-XX-X-XXX
 ① ② ③ ④ ⑤ ⑥ ⑦ ⑧ ⑨

① Series No: P=Pin Header F=Female Header B=Box Header E=Injector Header	② Pitch: 08=0.80 10=1.00 12=1.27 20=2.00 25=2.54 30=3.96 50=5.08	③ Tail&Mounting Style: 9D=Right Angle DIP Type 9S=Straight SMT Type 0D=Straight DIP Type 0S=Horizontal SMT Type	④ No. of Pins: Single Row Double Row 101=1*1Pin 201=2*1Pin 102=1*2Pin 202=2*2Pin 140=1*40pin 240=2*40pin	⑤ Insulator Color: A:Black B:Brown C:Red D:Orange E:Yellow F:Green G:Blue H:Violet J:Gray K:White P:Light Blue
⑥ Material Type: A-PBT B-PA46 C-PA6T D-PA9T E-LCP	⑦ Plating Type: 0*-Sn-Au 1*-Ni 2*-Sn 3*-Matte-Tin 5*-Au 0A-Sn-Au 1u" 0F-Sr-Au 10u" 5A-Au 1u" 0B-Sn-Au 2u" 0G-Sn-Au 15u" 6B-Au 2u" 0C-Sn-Au 3u" 0H-Sn-Au 30u" 5C-Au 3u" 0D-Sn-Au 4u" 0I-Sn-Au 40u" ! 0E-Sn-Au 5u" 0J-Sn-Au 50u" 5J-Au 50u"	⑧ RoHS Request: 0:No Request 1:RoHS 2:HF (Halogen Free)	⑨ Customer Code	

GENERAL TOLERANCES		SCALE:	NAME	DATE
LINEAR	ANGLES	1:1	黎腾	2017.06.16
0.0±0.25	X° REF±6°	APPROVED		
0.00±0.15	X° ±3°	DESIGNER	肖坤权	2017.06.16
0.000±0.08	X° X'±2°	DRAWN	旷洪	2017.06.16

康导新能源
 网址: www.dgonne.com 电话: 0769-85337633
 邮箱: 2850175986@qq.com 传真: 0769-85392827

TITLE:
Pitch3.96mm Pin Header, Single Plastic,
Single Row, DIP

PART. NO: KDPH-0117
DWG. NO: ENDE0117
REV: AO SHEET: 1/1