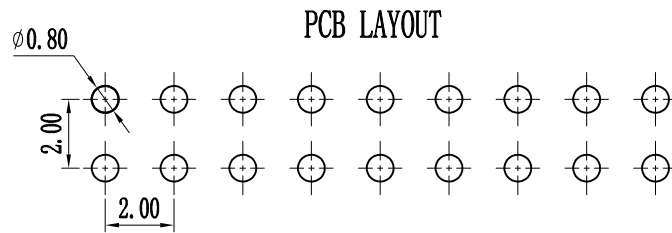
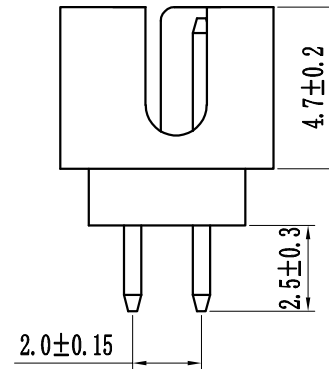
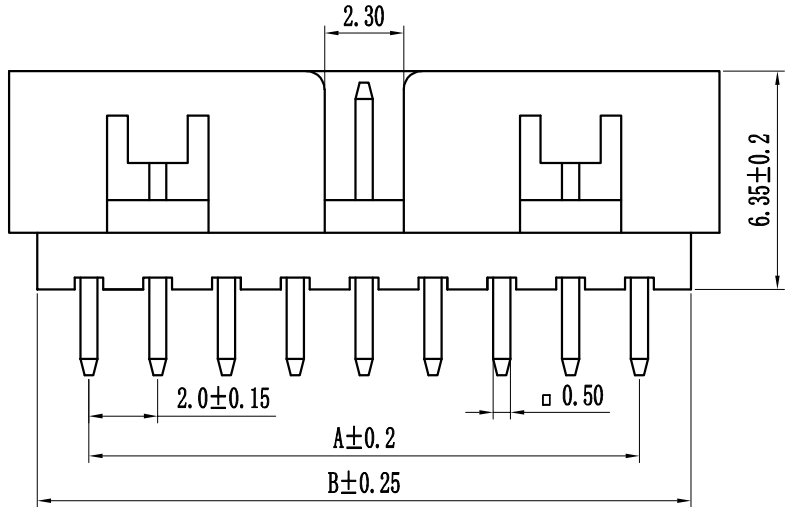
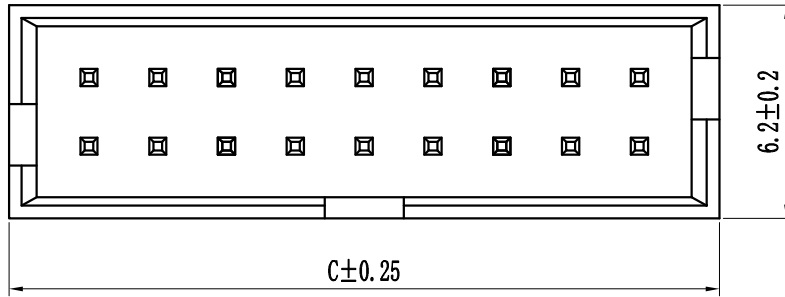


环保物料

| Pin数 | 尺寸A | 尺寸B | 尺寸C |
|------|-------|-------|-------|
| 2x5 | 8.00 | 11.00 | 12.65 |
| 2x6 | 10.00 | 13.00 | 14.65 |
| 2x7 | 12.00 | 15.00 | 16.65 |
| 2x8 | 14.00 | 17.00 | 18.65 |
| 2x9 | 16.00 | 19.00 | 20.65 |
| 2x10 | 18.00 | 21.00 | 22.65 |
| 2x11 | 20.00 | 23.00 | 24.65 |
| 2x12 | 22.00 | 25.00 | 26.65 |
| 2x13 | 24.00 | 27.00 | 28.65 |
| 2x14 | 26.00 | 29.00 | 30.65 |
| 2x15 | 28.00 | 31.00 | 32.65 |
| 2x16 | 30.00 | 33.00 | 34.65 |
| 2x17 | 32.00 | 35.00 | 36.65 |
| 2x18 | 34.00 | 37.00 | 38.65 |
| 2x19 | 36.00 | 39.00 | 40.65 |
| 2x20 | 38.00 | 41.00 | 42.65 |
| 2x21 | 40.00 | 43.00 | 44.65 |
| 2x22 | 42.00 | 45.00 | 46.65 |
| 2x23 | 44.00 | 47.00 | 48.65 |
| 2x24 | 46.00 | 49.00 | 50.65 |
| 2x25 | 48.00 | 51.00 | 52.65 |
| 2x26 | 50.00 | 53.00 | 54.65 |
| 2x27 | 52.00 | 55.00 | 56.65 |
| 2x28 | 54.00 | 57.00 | 58.65 |
| 2x29 | 56.00 | 59.00 | 60.65 |
| 2x30 | 58.00 | 61.00 | 62.65 |
| 2x31 | 60.00 | 63.00 | 64.65 |
| 2x32 | 62.00 | 65.00 | 66.65 |
| 2x33 | 64.00 | 67.00 | 68.65 |
| 2x34 | 66.00 | 69.00 | 70.65 |
| 2x35 | 68.00 | 71.00 | 72.65 |
| 2x36 | 70.00 | 73.00 | 74.65 |
| 2x37 | 72.00 | 75.00 | 76.65 |
| 2x38 | 74.00 | 77.00 | 78.65 |
| 2x39 | 76.00 | 79.00 | 80.65 |
| 2x40 | 78.00 | 81.00 | 82.65 |



Specification:
 Current Rating : 1.5AMP
 Temperature Range : -40°Cto+105°C
 Contact Resistance : 20mΩ Max
 Insulation Resistance : 1000MΩ Min
 Withstanding Voltage : AC 500V
 Material:
 Insulator : Polyester (UL94V-0)
 Standard:PBT/PA6T/LCP
 Contact: Brass
 Plating : Au or Sn Over 50u" Ni

| B 20 0D-XXX X X-XX-X-XXX | | | | |
|---------------------------|---|-------------------------|-----------------|-------------|
| ① | ② | ③ | ④ | ⑤ |
| ① Series No: | ② Pitch: | ③ Tail/Mounting Style: | ④ No. of Pins: | |
| P=Pin Header | 08-0.80 | 9D-Right Angle DIP Type | Single Row | Double Row |
| F=Female Header | 10=1.00 | 9S-Straight SMT Type | 101=1x1Pin | 201=2x1Pin |
| B=Box Header | 12=1.27 | 0D-Straight DIP Type | 102=1x2Pin | 202=2x2Pin |
| E=Ejector Header | 20=2.00 | 0S-Horizontal SMT Type | ! | ! |
| | 25=2.54 | | 140=1x40pin | 240=2x40pin |
| | 39=3.96 | | | |
| | 50=5.08 | | | |
| ⑤ Insulator Color: | | | | |
| A:Black B:Brown C:Red | | | | |
| D:Orange E:Yellow F:Green | | | | |
| G:Blue H:Violet J:Gray | | | | |
| K:White P:Light Blue | | | | |
| ⑥ Material Type: | ⑦ Plating Type: | ⑧ RoHS Request: | ⑨ Customer Code | |
| A-PBT | 0*-Sn-Au 1*-Ni 2*-Sn 3*-Matte-Tin 5*-Au | 0:No Request | | |
| B-PA46 | 0A-Sn-Au 1u" 0F-Sn-Au 10u" 5A-Au 1u" | 1:RoHS | | |
| C-PA6T | 0B-Sn-Au 2u" 0G-Sn-Au 15u" 5B-Au 2u" | 2:HF (Halogen Free) | | |
| D-PA9T | 0C-Sn-Au 3u" 0H-Sn-Au 30u" 5C-Au 3u" | | | |
| E-LCP | 0D-Sn-Au 4u" 0I-Sn-Au 40u" ! | | | |
| | 0E-Sn-Au 5u" 0J-Sn-Au 50u" 5J-Au 50u" | | | |

| GENERAL TOLERANCES | | SCALE: | NAME | DATE | 康导新能源 网址: www.dgconne.com 电话: 0769-8537633 邮箱: 2850175988@qq.com 传真: 0769-85392827 | PART. NO: | | | | | | | | |
|--------------------|-----------------|----------|----------|------------|--|-----------|----|------------|--------|---|------|----|--------|-----|
| LINER | ANGLES | 1:1 | 黎腾 | 2017.06.16 | | KDBH-0022 | | | | | | | | |
| 0.00±0.25 | X° REF±6° | APPROVED | 肖坤权 | 2017.06.16 | | DWG. NO: | | | | | | | | |
| 0.00±0.15 | X° ±3° | DESIGNER | 肖坤权 | 2017.06.16 | | ENDE2022 | | | | | | | | |
| REV. | REVISION RECORD | DATE | SIZE: A4 | 0.000±0.08 | X° X'±2° | DRAWN | 旷淇 | 2017.06.16 | TITLE: | Pitch2.00mm Box Header, Dual Row, Plastic Height 6.35mm, DIP | REV: | A0 | SHEET: | 1/1 |