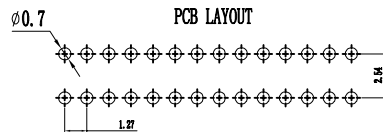
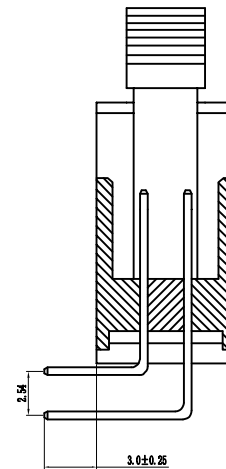
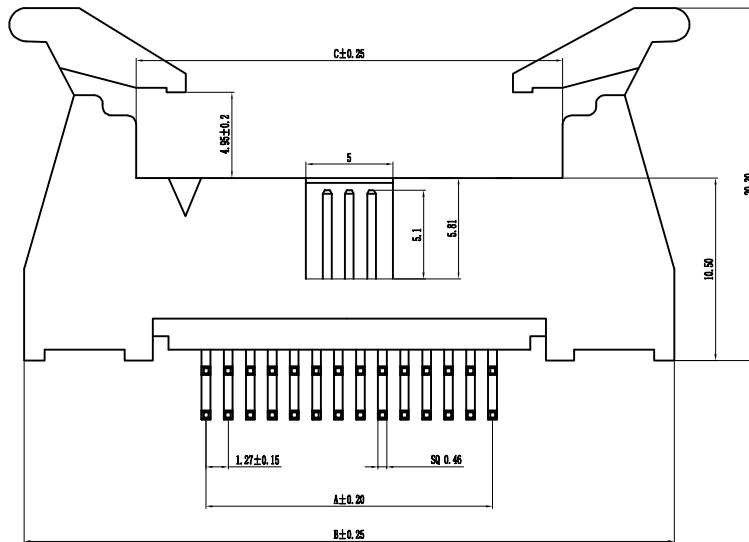
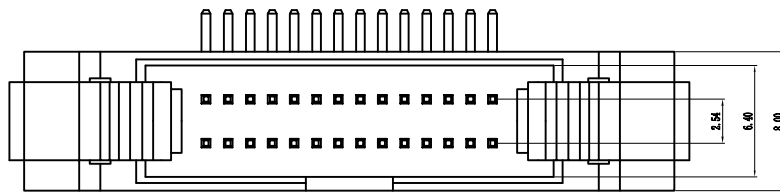


环保物料

| Pin数 | 尺寸A | 尺寸B | 尺寸C |
|------|-------|-------|-------|
| 2×6 | 6.35 | 27.32 | 14.42 |
| 2×8 | 8.89 | 29.86 | 16.96 |
| 2×10 | 11.43 | 32.40 | 19.50 |
| 2×12 | 13.97 | 34.94 | 22.04 |
| 2×14 | 16.51 | 37.48 | 24.58 |
| 2×16 | 19.05 | 40.02 | 27.12 |
| 2×18 | 21.59 | 42.56 | 29.66 |
| 2×20 | 24.13 | 45.10 | 32.20 |
| 2×22 | 26.67 | 47.64 | 34.74 |
| 2×24 | 29.21 | 50.18 | 37.28 |
| 2×26 | 31.75 | 52.72 | 39.82 |
| 2×28 | 34.29 | 55.26 | 42.36 |
| 2×30 | 36.83 | 57.80 | 44.90 |
| 2×32 | 39.37 | 60.34 | 47.44 |
| 2×34 | 41.91 | 62.88 | 49.98 |
| 2×36 | 44.45 | 65.42 | 52.52 |
| 2×38 | 46.99 | 67.96 | 55.06 |
| 2×40 | 49.53 | 70.50 | 57.60 |
| 2×42 | 52.07 | 73.04 | 60.14 |
| 2×44 | 54.61 | 75.58 | 62.68 |
| 2×46 | 57.15 | 78.12 | 65.22 |
| 2×48 | 59.69 | 80.66 | 67.76 |
| 2×50 | 62.23 | 83.20 | 70.30 |
| 2×52 | 64.77 | 85.74 | 72.84 |
| 2×54 | 67.31 | 88.28 | 75.38 |
| 2×56 | 69.85 | 90.82 | 77.92 |
| 2×58 | 72.39 | 93.36 | 80.46 |
| 2×60 | 74.93 | 95.90 | 83.00 |



Specification:
 Current Rating : 1AMP
 Temperature Range : -40°C to +105°C
 Contact Resistance : 20mΩ Max
 Insulation Resistance : 1000MΩ Min
 Withstanding Voltage : AC 500V
 Material:
 Insulator : Polyester (UL94V-0)
 Standard: PBT/PA6T/LCP
 Contact: Brass
 Plating : Au or Sn Over 50u" Ni

E 12 9D-XXX X X-XX-X-XXX
 ① ② ③ ④ ⑤ ⑥ ⑦ ⑧ ⑨

| | | | | |
|---|---|---|---|--|
| ① Series No: P=Pin Header F=Female Header B=Box Header E=Ejector Header | ② Pitch: 08=0.80 10=1.00 12=1.27 20=2.00 25=2.54 39=3.96 50=5.08 | ③ Tail/Mounting Style: 9D=Right Angle DIP Type 9S=Straight SMT Type 0D=Straight DIP Type 0S=Horizontal SMT Type | ④ No. of Pins: Single Row Double Row 101=1*1Pin 201=2*1Pin 102=1*2Pin 202=2*2Pin i i i i 140=1*40pin 240=2*40pin | ⑤ Insulator Color: A:Black B:Brown C:Red D:Orange E:Yellow F:Green G:Blue H:Violet J:Gray K:White P:Light Blue |
| ⑥ Material Type: A=PBT B=PA46 C=PA6T D=PA9T E=LCP | ⑦ Plating Type: 0*-Sn-Au 1*-Ni 2*-Sn 3*-Matte-Tin 5*-Au 0A-Sn-Au 1u" 0F-Sn-Au 10u" 5A-Au 1u" 0B-Sn-Au 2u" 0C-Sn-Au 15u" 5B-Au 2u" 0C-Sn-Au 3u" 0H-Sn-Au 30u" 5C-Au 3u" 0D-Sn-Au 4u" 0I-Sn-Au 40u" i 0E-Sn-Au 5u" 0J-Sn-Au 50u" 5J-Au 50u" | ⑧ RoHS Request: 0:No Request 1:RoHS 2:HF (Halogen Free) | ⑨ Customer Code | |

| REV. | REVISION RECORD | DATE | UNIT: MM | GENERAL TOLERANCES | | SCALE: 1:1 | NAME | DATE |
|------|-----------------|------------|----------|--------------------|-----------|------------|------|------------|
| | | | | LINEAR | ANGLES | | | |
| | | | | 0.00±0.15 | X° REF±6° | | 黎腾 | 2017.06.16 |
| | | | | 0.00±0.15 | X° ±3° | | 肖坤权 | 2017.06.16 |
| | | | | 0.000±0.08 | X° X'±2° | | 旷淇 | 2017.06.16 |
| AO | 新图面发行 | 2017.06.16 | UNIT: MM | 0.00±0.15 | X° ±3° | | | |

康导新能源
 网址: www.dgoonne.com 电话: 0769-85337633
 邮箱: 2850176988@qq.com 传真: 0769-85392827

TITLE:
 1.27*2.54mm Ejector Header, Dual Row,
 Plastic Height 10.5mm, Right Angle Type

| | |
|-----------|-----------|
| PART. NO: | KDEH-0006 |
| DWG. NO: | ENDE3006 |
| REV: | AO |
| SHEET: | 1/1 |