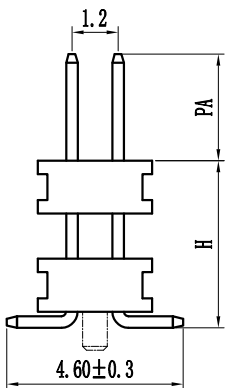
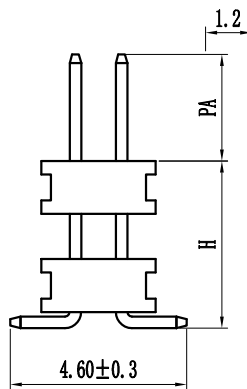
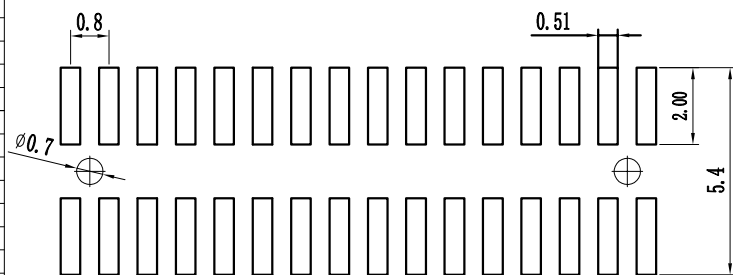
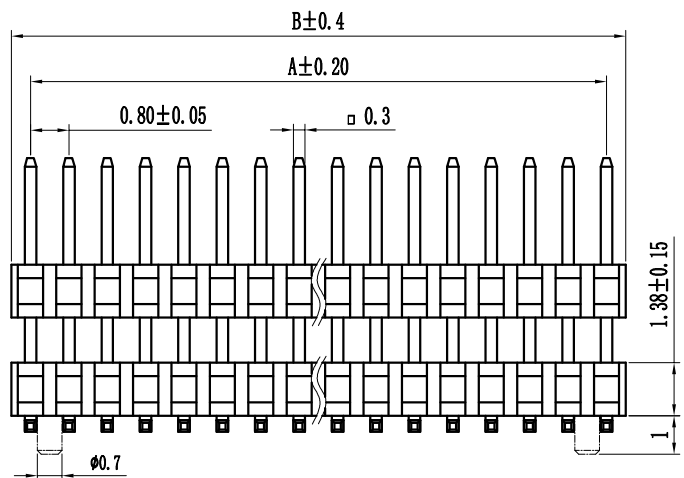
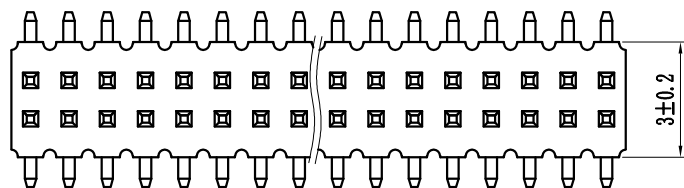


# 环保物料

Pin数	尺寸A	尺寸B
2X2	0.8	1.6
2X3	1.6	2.4
2X4	2.4	3.2
2X5	3.2	4.0
2X6	4.0	4.8
2X7	4.8	5.6
2X8	5.6	6.4
2X9	6.4	7.2
2X10	7.2	8.0
2X11	8.0	8.8
2X12	8.8	9.6
2X13	9.6	10.4
2X14	10.4	11.2
2X15	11.2	12.0
2X16	12.0	12.8
2X17	12.8	13.6
2X18	13.6	14.4
2X19	14.4	15.2
2X20	15.2	16.0
2X21	16.0	16.8
2X22	16.8	17.6
2X23	17.6	18.4
2X24	18.4	19.2
2X25	19.2	20.0
2X26	20.0	20.8
2X27	20.8	21.6
2X28	21.6	22.4
2X29	22.4	23.2
2X30	23.2	24.0
2X31	24.0	24.8
2X32	24.8	25.6
2X33	25.6	26.4
2X34	26.4	27.2
2X35	27.2	28.0
2X36	28.0	28.8
2X37	28.8	29.6
2X38	29.6	30.4
2X39	30.4	31.2
2X40	31.2	32.0
2X41	32.0	32.8
2X42	32.8	33.6
2X43	33.6	34.4
2X44	34.4	35.2
2X45	35.2	36.0
2X46	36.0	36.8
2X47	36.8	37.6
2X48	37.6	38.4
2X49	38.4	39.2
2X50	39.2	40.0



Specification:  
 Current Rating : 0.75AMP  
 Temperature Range : -40°Cto+105°C  
 Contact Resistance : 30mΩ Max  
 Insulation Resistance : 1000MΩ Min  
 Withstanding Voltage : AC 500V  
 Material:

Insulator : Polyester (UL94V-0)  
 Standard:PA6T/LCP  
 Contact: Brass  
 Plating : Au or Sn Over 50u" Ni

P 08 9S-XXX X X-XX-X-XXX  
 ① ② ③ ④ ⑤ ⑥ ⑦ ⑧ ⑨

① Series No: P=Pin Header F=Female Header B=Box Header E=Ejector Header	② Pitch: 08=0.80 10=1.00 12=1.27 20=2.00 25=2.54 39=3.96 50=5.08	③ Tail/Mounting Style: 9D=Right Angle DIP Type 9S=Straight SMT Type 0D=Straight DIP Type 0S=Horizontal SMT Type	④ No. of Pins: Single Row Double Row 101=1*1Pin 201=2*1Pin 102=1*2Pin 202=2*2Pin 140=1*40pin 240=2*40pin	⑤ Insulator Color: A:Black B:Brown C:Red D:Orange E:Yellow F:Green G:Blue H:Violet J:Gray K:White P:Light Blue
⑥ Material Type: A-PBT B-PA46 C-PA6T D-PA9T E-LCP	⑦ Plating Type: 0*-Sn-Au 1*-Ni 2*-Sn 3*-Matte-Tin 5*-Au 0A-Sn-Au 1u" 0F-Sn-Au 10u" 5A-Au 1u" 0B-Sn-Au 2u" 0G-Sn-Au 15u" 5B-Au 2u" 0C-Sn-Au 3u" 0H-Sn-Au 30u" 5C-Au 3u" 0D-Sn-Au 4u" 0I-Sn-Au 40u" : 0E-Sn-Au 5u" 0J-Sn-Au 50u" 5J-Au 50u"	⑧ RoHS Request: 0:No Request 1:RoHS 2:HF (Halogen Free)	⑨ Customer Code	

GENERAL TOLERANCES		SCALE: 1:1	NAME	DATE
LINEAR	ANGLES	APPROVED	黎腾	2017.06.16
0.0±0.25	X° REF±6°	DESIGNER	肖坤权	2017.06.16
0.00±0.15	X° ±3°	DRAWN	旷淇	2017.06.16
0.00±0.08	X° X'±2°			

**康导新能源**  
 网址: www.dgconne.com 电话: 0769-85337833  
 邮箱: 2850175886@qq.com 传真: 0769-85392827

TITLE:  
 0.8\*1.2 Pin Header, Dual Plastic,  
 Dual Row, SMT Type

PART. NO: KDPH-0002
DWG. NO: ENDE0002
REV: AO SHEET: 1/1