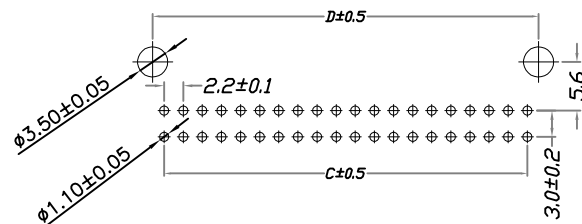
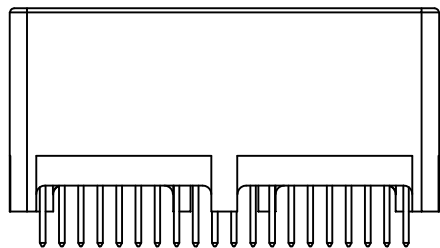
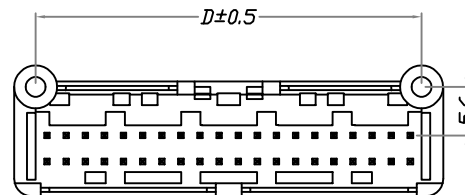
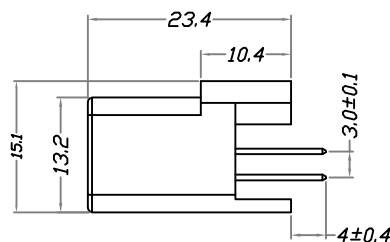
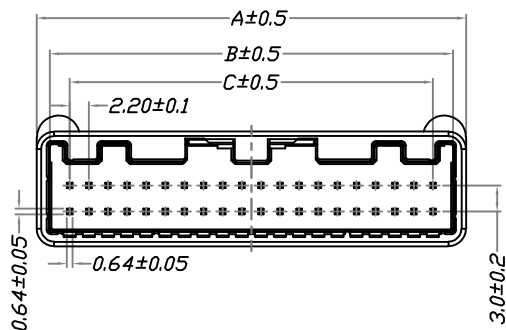
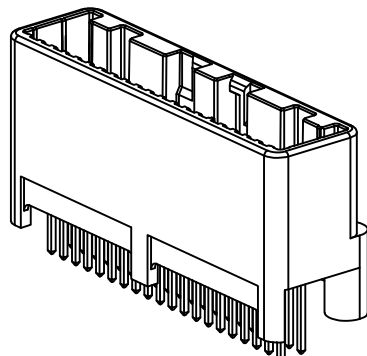
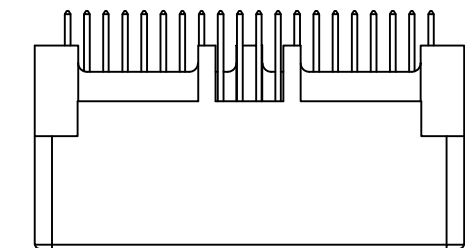


环保物料

Specification技术规范:

Voltage Rating 额定电压: 250V AC/DC
 Current Rating 额定电流: 3A AC/DC
 Withand Voltage 耐电压: 1000V AC/Minute
 Contact Resistance 接触电阻: 30mΩ Max
 Insulation Resistance 绝缘电阻: 1000MΩ Min/1000V DC
 Temperature Range 工作温度: -40°C~+105°C



Recommended PCB pattern

Circuits Part No	Dimensions			
	A	B	C	D
2*4P	14.20	11.40	6.60	9.20
2*6P	18.60	15.80	11.00	13.60
2*8P	23.00	20.20	15.40	18.00
2*10P	27.40	24.60	19.80	22.40
2*12P	31.80	29.00	24.20	26.80
2*14P	36.20	33.40	28.60	31.20
2*16P	40.60	37.80	33.00	35.60
2*18P	45.00	42.20	37.40	40.00
2*20P	49.40	46.60	41.80	44.40

Material	Color	PIN Material
PBT,UL94V-0	WHITE	Brass/Tin&Gold-plated

REV.	新图面发行	2024.08.03	UNIT: MM	GENERAL TOLERANCES		SCALE:	NAME	DATE				
				LINEAR	ANGLES	1:1						
								0.0±0.30	X° REF±6°	APPROVED	黎腾	2024.08.03
								0.00±0.20	X° ±3°	DESIGNER	肖坤权	2024.08.03
				0.000±0.10	X° X'±2°	DRAWN	魏航程	2024.08.03				

康导新能源
 网址: www.dgconne.com 电话: 0769-85337633
 邮箱: 2850175988@qq.com 传真: 0769-85392827

PART. NO:	42206W00-2*NPA-A1-**	
DWG. NO:		
REV:	A0	SHEET: 1/1

TITLE: 2.2PITCH 板端180度DIP型 WAFER