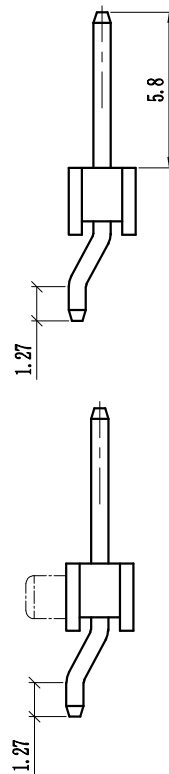
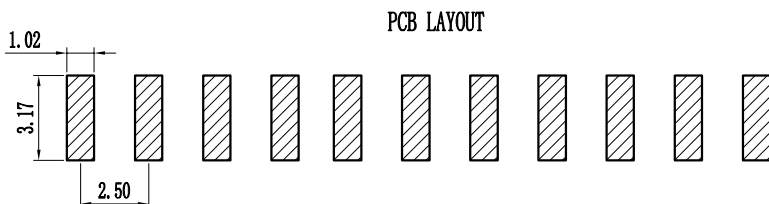
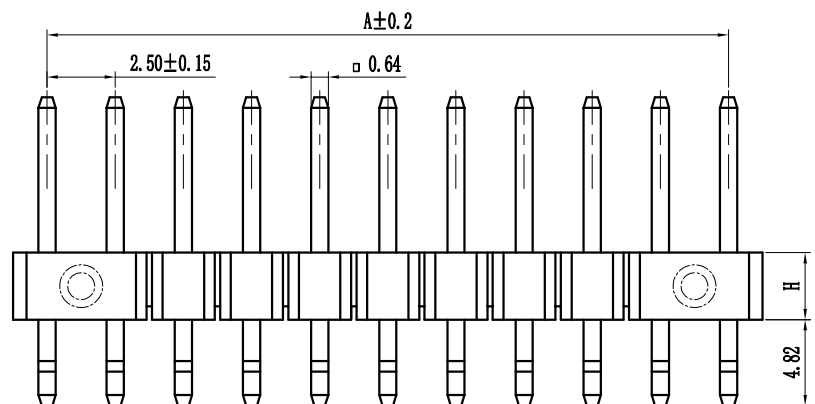
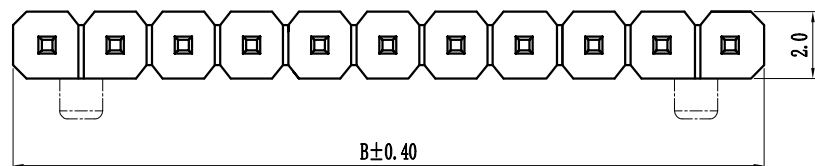


# 环保物料

Pin数	尺寸A	尺寸B
1X1	-	2.50
1X2	2.50	5.00
1X3	5.00	7.50
1X4	7.50	10.00
1X5	10.00	12.50
1X6	12.50	15.00
1X7	15.00	17.50
1X8	17.50	20.00
1X9	20.00	22.50
1X10	22.50	25.00
1X11	25.00	27.50
1X12	27.50	30.00
1X13	30.00	32.50
1X14	32.50	35.00
1X15	35.00	37.50
1X16	37.50	40.00
1X17	40.00	42.50
1X18	42.50	45.00
1X19	45.00	47.50
1X20	47.50	50.00
1X21	50.00	52.50
1X22	52.50	55.00
1X23	55.00	57.50
1X24	57.50	60.00
1X25	60.00	62.50
1X26	62.50	65.00
1X27	65.00	67.50
1X28	67.50	70.00
1X29	70.00	72.50
1X30	72.50	75.00
1X31	75.00	77.50
1X32	77.50	80.00
1X33	80.00	82.50
1X34	82.50	85.00
1X35	85.00	87.50
1X36	87.50	90.00
1X37	90.00	92.50
1X38	92.50	95.00
1X39	95.00	97.50
1X40	97.50	100.00



Specification:  
 Current Rating : 3.0AMP  
 Temperature Range : -40℃to+105℃  
 Contact Resistance : 20mΩ Max  
 Insulation Resistance : 1000MΩ Min  
 Withstanding Voltage : AC 500V  
 Material:  
 Insulator : Polyester (UL94V-0)  
 Standard:PA6T/LCP  
 Contact: Brass  
 Plating : Au or Sn Over 50u" Ni

Height
H=1.5mm、3.0mm、3.3mm

**P 2X 0S-XXX X X-XX-X-XXX**  
 ① ② ③ ④ ⑤ ⑥ ⑦ ⑧ ⑨

① Series No: P=Pin Header F=Female Header B=Box Header E=Injector Header	② Pitch: 08=0.80 10=1.00 12=1.27 20=2.00 2X=2.50 39=3.96 50=5.08	③ Tail&Mounting Style: 90=Right Angle DIP Type 9S=Straight SMT Type 0D=Straight DIP Type 0S=Horizontal SMT Type	④ No. of Pins: Single Row Double Row 101=1*1Pin 201=2*1Pin 102=1*2Pin 202=2*2Pin 140=1*40pin 240=2*40pin	⑤ Insulator Color: A:Black B:Brown C:Red D:Orange E:Yellow F:Green G:Blue H:Violet J:Gray K:White P:Light Blue
⑥ Material Type: A-PBT B-PA46 C-PA6T D-PA9T E-LCP	⑦ Plating Type: 0*-Sn-Au 1*-Ni 2*-Sn 3*-Matte-Tin 5*-Au 0A-Sn-Au 1u" 0F-Sr-Au 10u" 5A-Au 1u" 0B-Sn-Au 2u" 0G-Sn-Au 15u" 6B-Au 2u" 0C-Sn-Au 3u" 0H-Sn-Au 30u" 5C-Au 3u" 0D-Sn-Au 4u" 0I-Sn-Au 40u" ! 0E-Sn-Au 5u" 0J-Sn-Au 50u" 5J-Au 50u"	⑧ RoHS Request: 0:No Request 1:RoHS 2:HF (Halogen Free)	⑨ Customer Code	

REV.	新图面发行	2017.06.16	UNIT: MM	GENERAL TOLERANCES		SCALE: 1:1	NAME	DATE
				LINEAR	ANGLES			
				0.00±0.15	X° REF±6°	APPROVED	黎腾	2017.06.16
				0.00±0.15	X° ±3°	DESIGNER	肖坤权	2017.06.16
				0.000±0.08	X° X'±2°	DRAWN	旷淇	2017.06.16
	REVISION RECORD	DATE	SIZE: A4					

**康导新能源**  
 网址: www.dgconne.com 电话: 0788-85337833  
 邮箱: 2850175988@qq.com 传真: 0788-85392827

PART. NO:	KDPH-0077
DWG. NO:	ENDE0077
REV:	AO
SHEET:	1/1